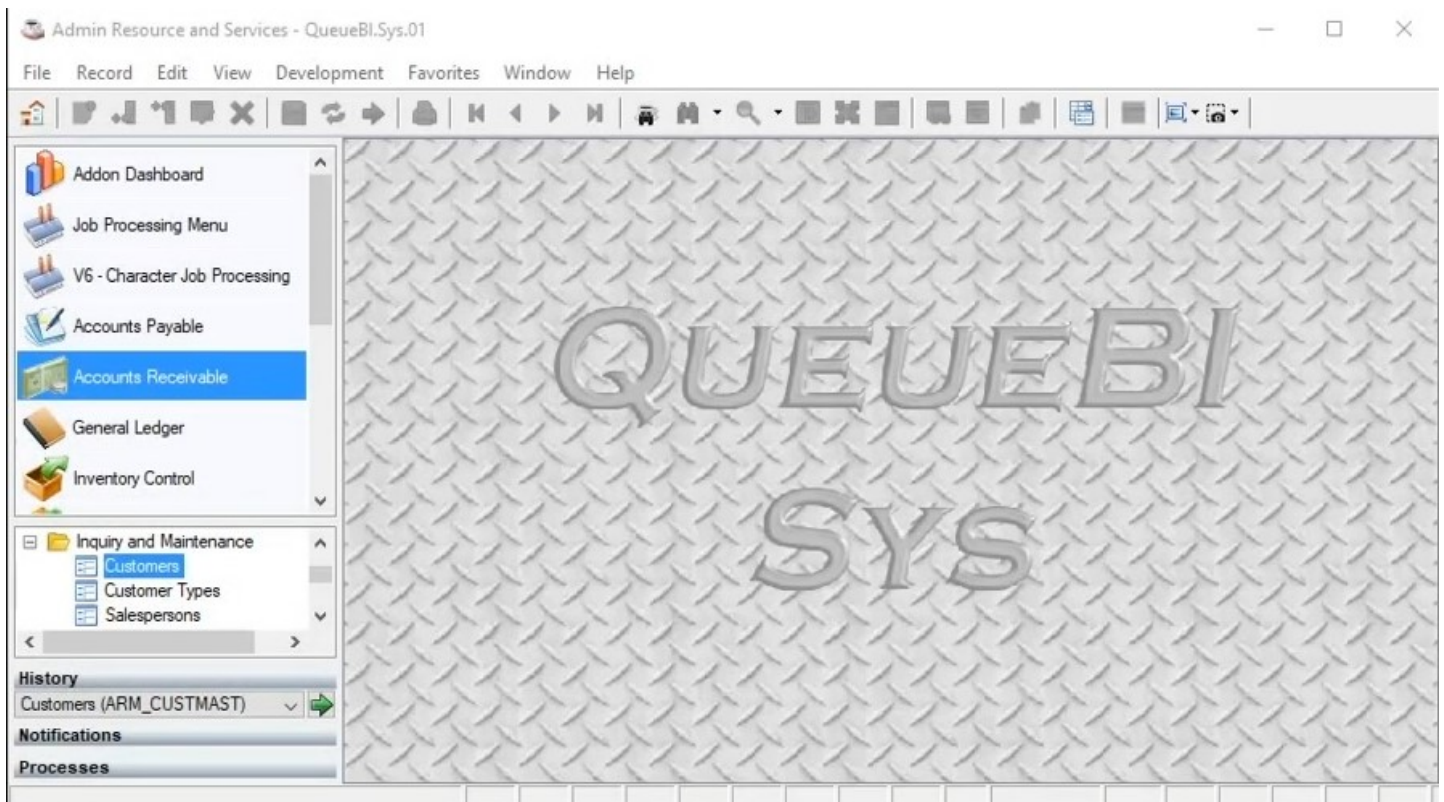


QueueBI Sys Hybrid Intro

QueueBI Sys Hybrid:

Queue, as in a queue of data; BI, as in Business Intelligence; and Sys, as in an ERP system for your complete business needs. Hybrid? The hybrid option provides an upgrade path for current ACS Master System end-users, integrating the modern features of a proven ERP system (AddonSoftware) with the current service repair attributes of the Master System. Upgrade your current core product without losing the service repair features for your shop!

The QueueBI Sys Hybrid option is a short-term upgrade path while we fully develop and test the service repair module for QueueBI Sys.



With modern and proven features, the user interface increases productivity with integrated tools for everyday processing, inquiries, and reporting. Standard features include processing steps which were considered add-on, bolt-on, optional, or modifications with the original dealers for the Master System.

While Admin Resource and Services fully supports and services all versions of the Master System from v6.00 through v9.5, we also want to provide an upgrade path for clients seeking the next generation in ERP systems. The hybrid option allows our clients to upgrade now, while we continue developing a robust and feature-rich replacement to the Master System.

QueueBI Sys Hybrid Intro

Modern merges with Legacy:

Field specific look-ups and inquiries.

Onscreen menu structure may be docked or undocked, located for end-user preference.

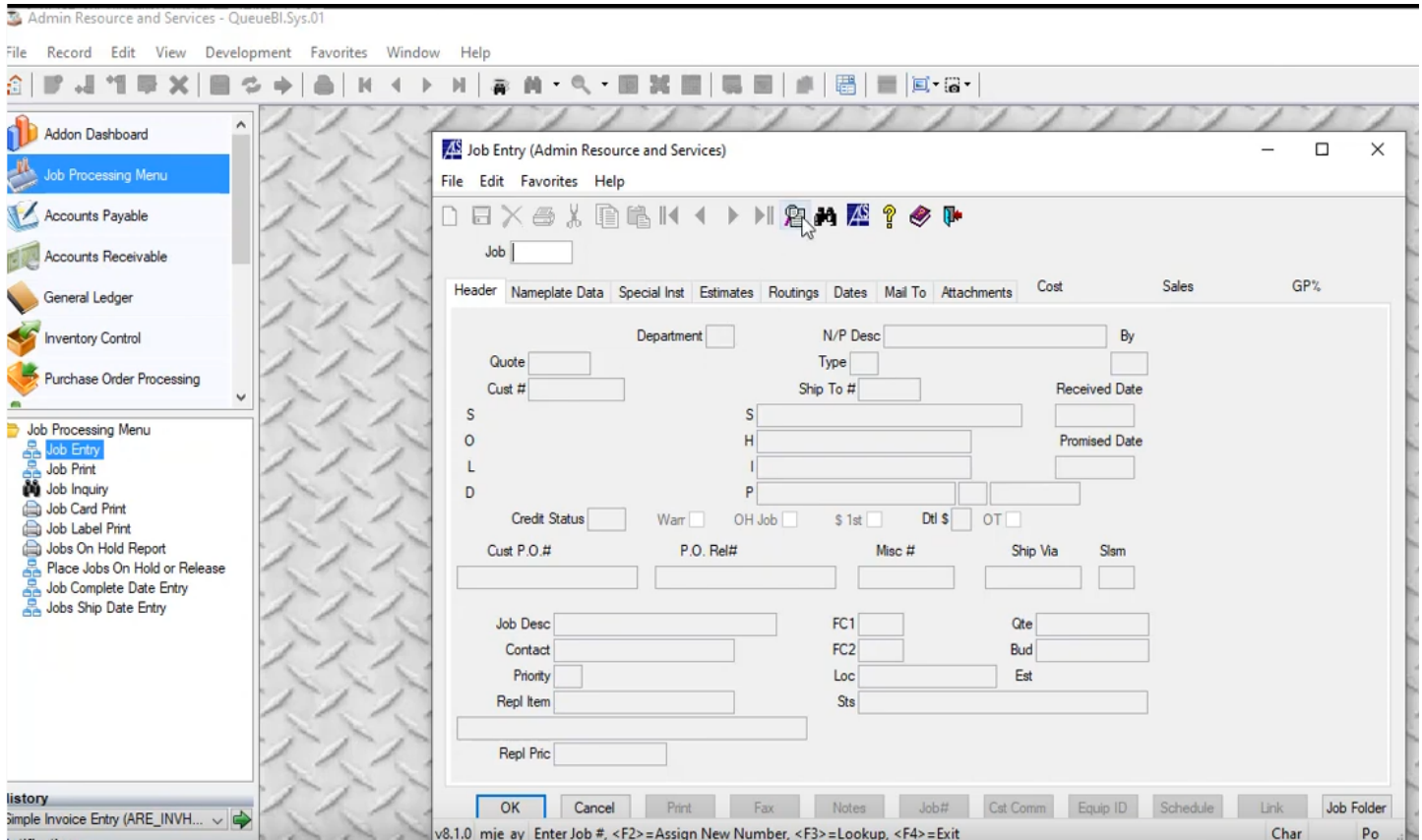
Process windows may be docked or undocked, located on multiple monitors for end-user preference.

System and process specific dashboard with drilldowns and specific data information:

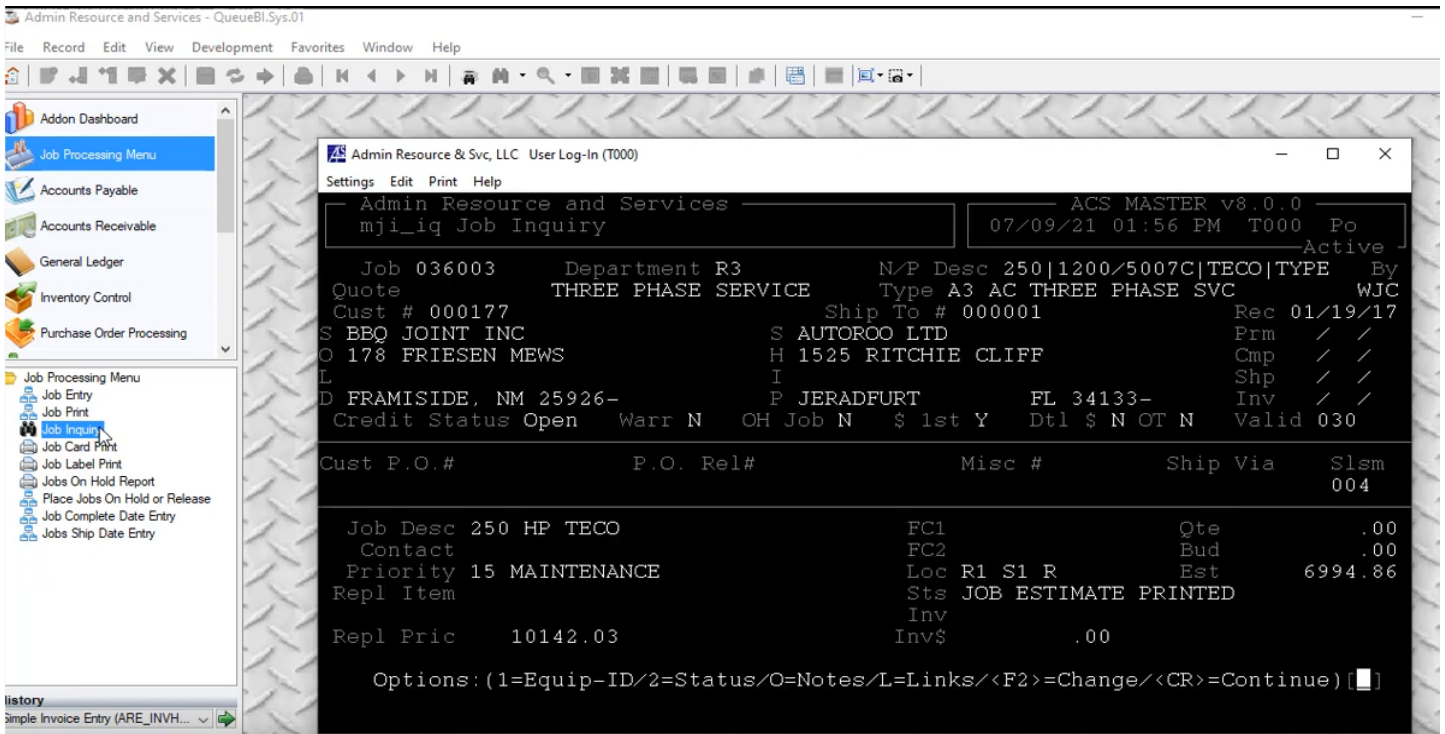
System and process specific dashboard with drilldowns and specific data information:

QueueBI Sys Hybrid Intro

And, a hybrid connection to Service Repair features:



Including character based interface:



QueueBI Sys Hybrid Intro

Want to see more: [QueueBI Sys—First Look Video Link.](#)

The QueueBI Sys Hybrid option is a short-term upgrade path while we fully develop and test the service repair module for QueueBI Sys. What will that look like??

Good question! Glad you asked:

- Fully integrated with modern features of AddonSoftware core product offering, including at-field inquiries, calendar widgets for date fields, dashboard integration, integrated forms and reporting, and user efficiency tools.
 - All the standard features of the ACS Master System... we can't really call our product a replacement if we don't fully replace all the features!
 - Dispatch and field technician features, including equipment pick-up forms, site inspection forms, GPS mapping to/from, and time/mileage to job allocation.
 - Equipment schedule/capacity planning—including technicians, teams or crews, vehicle fleet, testing equipment, ovens, machining area, and specific equipment planning.
 - Technician work list distributed by email or SMS text messaging. Text messaging updates back to the schedule for time allocation and task completion.
 - Sub-contractor and expense allocation to job costing along with standard labor and material allocation.
 - General ledger cost distribution by "type of work", job type, and equipment based costing.
 - Expanded nameplate definitions—no more limitation to 25 nameplate fields! Filters, look-ups, and inspection based forms by nameplate fields.
 - Integrated inspection forms with measurement range and red-flag limitations.
 - Automatic receiving and inspection templates for work instructions and estimating. Check box selection options for estimating. Free-form estimate entry and dialog formats.
 - Integrated job deposit and inspection fee standard, parameter based. Set per customer as requirement for opening service jobs.
 - Inventory enhancements: nameplate definitions, branding fields, auto-price table adjustments by cost groups, cost layering for pricing methods, and enhanced pricing table for adders/reductions.
 - Tablet and smart-phone compatible.
-